

# South Gloucestershire Landscape Character Assessment

## Annex I: Visually Important Hillside

### South Gloucestershire Council

**Final Draft Report for Adoption Chapter 10**

Prepared by LUC

September 2024



Version	Status	Prepared	Checked	Approved	Date
1	Draft Method and Pilot	E White	K Davies	K Davies	24.02.2023
2	Draft Report	J Ashton Davies E White	E White	K Davies	28.04.2023
3	Draft Report	E White	E White	K Davies	05.07.2023
4	Final Draft	E White	E White	K Davies	01.11.2023
5	Final Draft (updated following New Local Plan Phase 3 consultation)	E White	E White	K Davies	20.06.2024
6	Final Draft Report for Adoption	E White	E White	K Davies	11.09.2024



## Land Use Consultants Limited

Registered in England. Registered number 2549296. Registered office: 250 Waterloo Road, London SE1 8RD. Printed on 100% recycled paper

# Contents

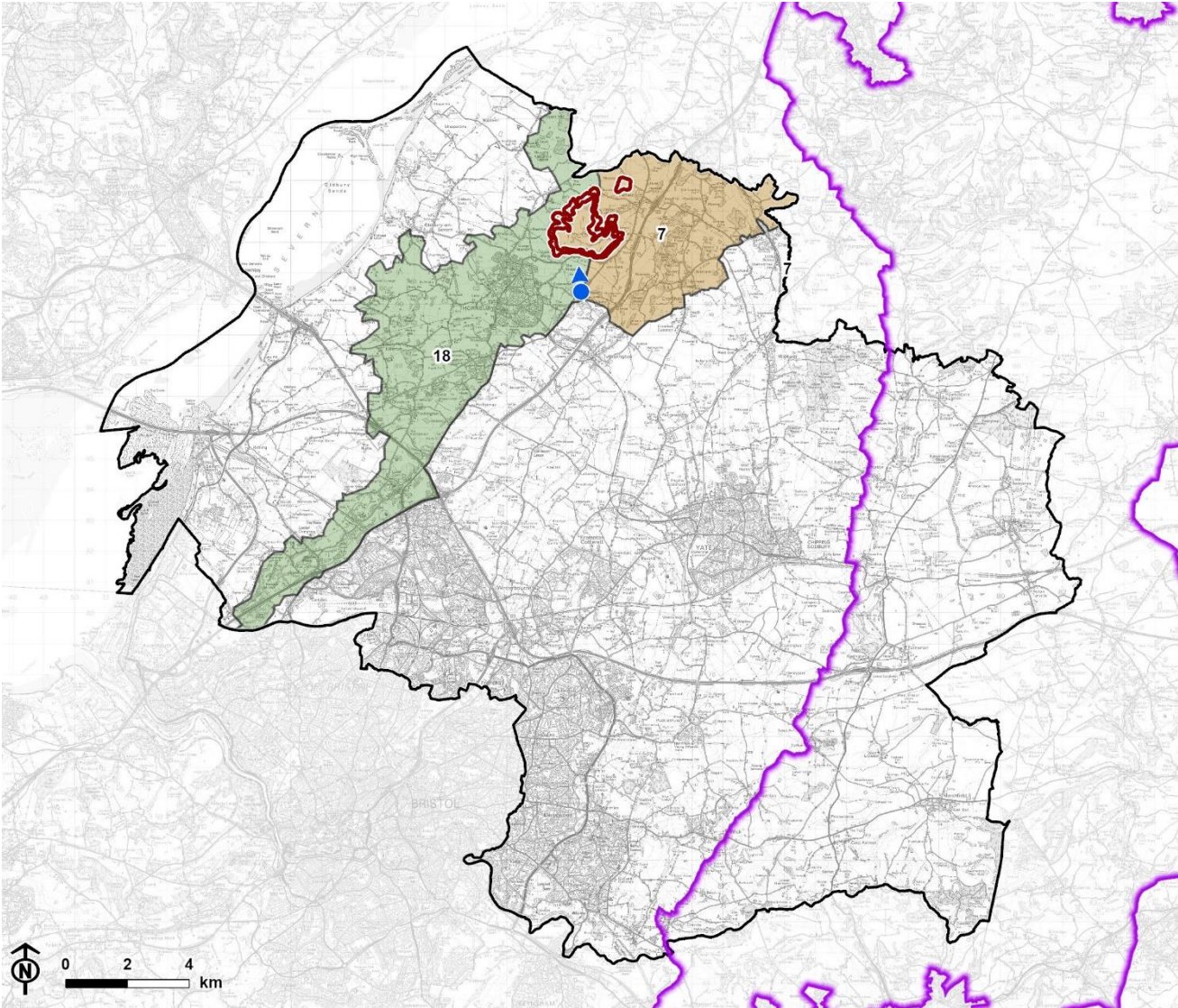
<b>Chapter 10</b>	<b>70</b>
Eastwood Park Spur – including Sundays Hill	
Characteristics	74
Summary	75

## Chapter 10

# Eastwood Park Spur – including Sundays Hill

The Eastwood Park Spur VIH comprises a circular complex area of ridges and the inclusion of the outlying Sundays Hill in the north-east. The VIH is located in the north-west of South Gloucestershire in between the villages of Rockhampton and Falfield, where it serves as a buffer between Rockhampton and the M5. It is located mostly within the Falfield Vale (LCA 7) landscape character area, with its western extent straddling the edge of the Severn Ridges (LCA 18) landscape character area. It partly encloses the distinctive bowl landform of the Falfield Vale and its presence in views across the landscape is emphasised by the surrounding lower-lying land to the east and west.

Figure 10.1: Location of the Eastwood Park Spur Visually Important Hillside and landscape character context



© Natural England copyright © Crown copyright and database rights, Ordnance Survey licence number 100023410 (2024).

CB:HS, EB:shayler\_h LUC 12274\_2024\_r1\_VIHSVPUpdates 17/07/2024  
Source: LUC, SGDC, NE, OS

- |  |                             |
|--|-----------------------------|
| Council boundary                               | <b>Parkland Vale LCT</b>    |
| Cotswolds National Landscape (AONB) boundary   | 7. Falfield Vale            |
| Eastwood Park Spur Visually Important Hillside | <b>Undulating Ridge LCT</b> |
| Photograph location                            | 18. Severn Ridges           |

Figure 10.2: Detailed map of the Eastwood Park Spur Visually Important Hillside

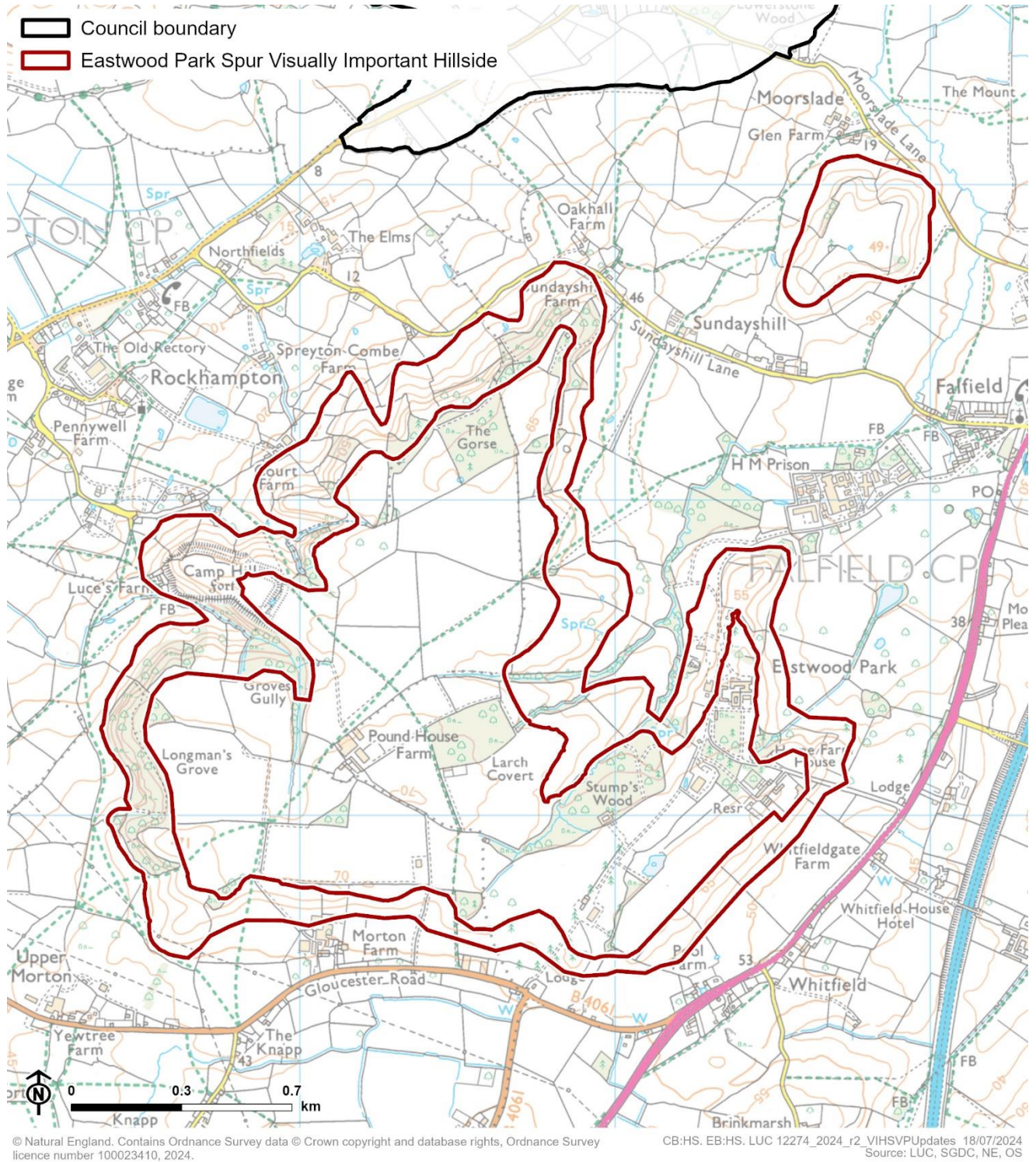


Figure 10.3: View of Easwood Park Spur from Buckover



## Characteristics

### Distinctiveness and identity

- The Eastwood Park Spur VIH is a readily identifiable feature on OS mapping, as a series of long narrow 'tongues' of contour lines drop away from an elevated plateau from a high to low elevation. The relatively steep sides of the spur are indicated by close contour lines (descending from around 70m to 40m). This is clear when seen in context to the adjacent vale landscape to the east and undulating ridge landscape to the west (where contours are at larger intervals).
- Evidence of an Iron Age fort (Camp Hill) is referenced on OS mapping, indicating a high point, where it is positioned on the top of the westerly section of the VIH.
- The VIH is a distinctive feature with a strong sense of identity as noted in the South Gloucestershire Landscape Character Assessment SPD description for LCA 7: Falfield Vale, which notes that the VIH comprises a "*defined scarp edge*". It is particularly distinctive in the way it contributes towards the bowl landform of the Falfield Vale.

### Visual prominence

- The VIH is visible from some public vantage points although LCA 18: Severn Ridges notes that "*the scarp edge is most prominent in the north, around Hill and Rockhampton*". The southern part of the VIH is visible from the strategic viewpoint at Whitewall Lane, Buckover (SVP 5).
- The areas of woodland located along the VIH form prominent features and LCA 7: Falfield Vale notes that they are characteristic along the scarp skyline, merging with woodland on the scarp face below.



## Character and value

- The character and appearance of the Eastwood Park Spur VIH is largely unspoilt by visual detractors. These are mainly limited to an existing wind turbine at Poundhouse Farm (67m tip height) and pylons which given their position towards on the plateau above the VIH, have some visual prominence when seen from the surrounding landscape. The VIH is also influenced by the close proximity of Eastwood Park Prison, located along the lower slopes of the VIH in the east and described in LCA 7: Falfield Vale as a "*large complex*".
- Landcover across the VIH comprises predominantly of medium to large-scale pastoral fields with regular and irregular boundaries. Deciduous woodland also makes up a large proportion of the VIH area which contains outward views, including at Longman's Grove, Groves Gully, and the Gorse.
- The eastern part of the VIH forms part of the Eastwood Park estate, where linear woodland, mature tree stands, and specimen trees contribute towards its distinctive parkland character and provides the backdrop and setting for the stately home at Eastwood Park.
- The VIH has a role in the landscape by providing containment to the north-eastern edge of LCA 18: Severn Ridges and by separating the lower-lying villages of Rockhampton and Falfield.

## Summary

Eastwood Park Spur is categorised as a VIH as it meets most of the criteria to some extent. It is readily identifiable as a natural landform feature on OS mapping; a distinctive feature with a strong sense of identity; has some prominence in views across the landscape; its character and appearance is largely unspoilt by visual detractors; and has a role in the landscape by containing a character area and providing separation between settlements.

Report produced by LUC

# Report produced by LUC

## **Bristol**

12th Floor, Beacon Tower, Colston Street, Bristol BS1 4XE  
0117 929 1997  
bristol@landuse.co.uk

## **Cardiff**

16A, 15th Floor, Brunel House, 2 Fitzalan Rd, Cardiff CF24 0EB  
0292 032 9006  
cardiff@landuse.co.uk

## **Edinburgh**

Atholl Exchange, 6 Canning Street, Edinburgh EH3 8EG  
0131 202 1616  
edinburgh@landuse.co.uk

## **Glasgow**

37 Otago Street, Glasgow G12 8JJ  
0141 334 9595  
glasgow@landuse.co.uk

## **London**

250 Waterloo Road, London SE1 8RD  
020 7383 5784  
london@landuse.co.uk

## **Manchester**

6th Floor, 55 King Street, Manchester M2 4LQ  
0161 537 5960  
manchester@landuse.co.uk

## **Sheffield**

32 Eyre Street, Sheffield, S1 4QZ  
0114 392 2366  
sheffield@landuse.co.uk

## **landuse.co.uk**

Landscape Design / Strategic Planning & Assessment / Transport Planning  
Development Planning / Urban Design & Masterplanning / Arboriculture  
Environmental Impact Assessment / Landscape Planning & Assessment  
Landscape Management / Ecology / Historic Environment / GIS & Visualisation